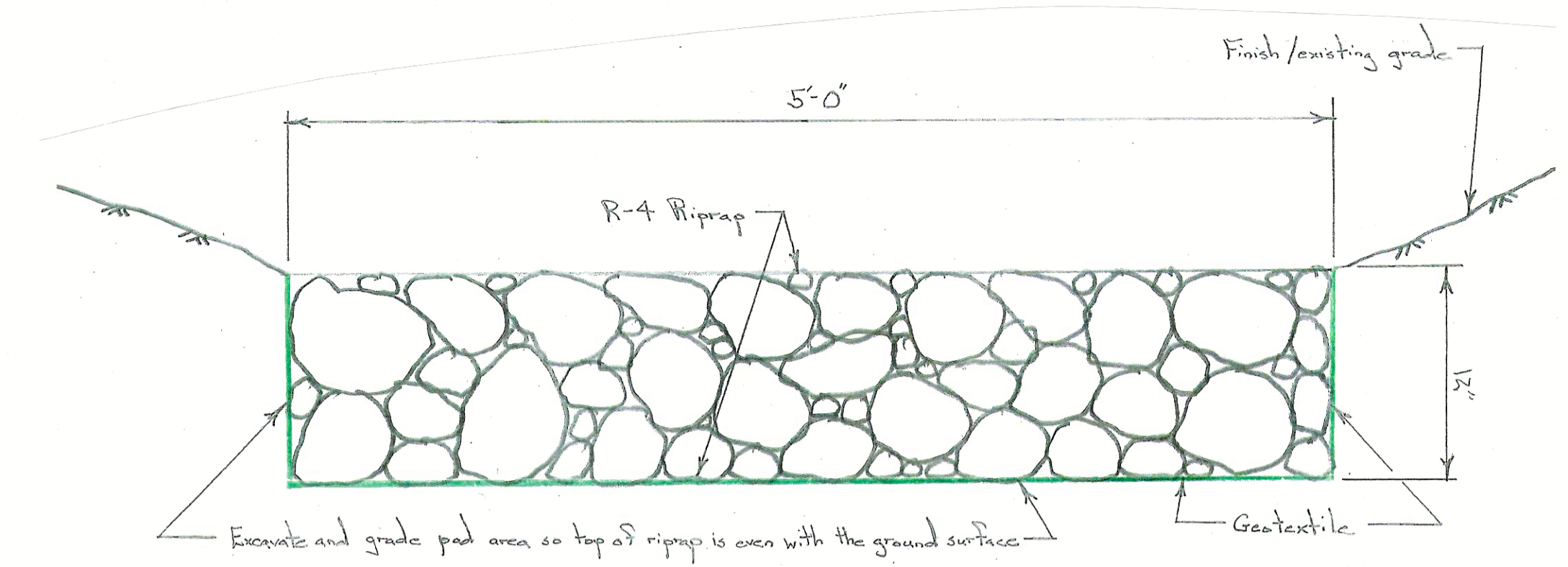


DRAINAGE PIPE PLAN

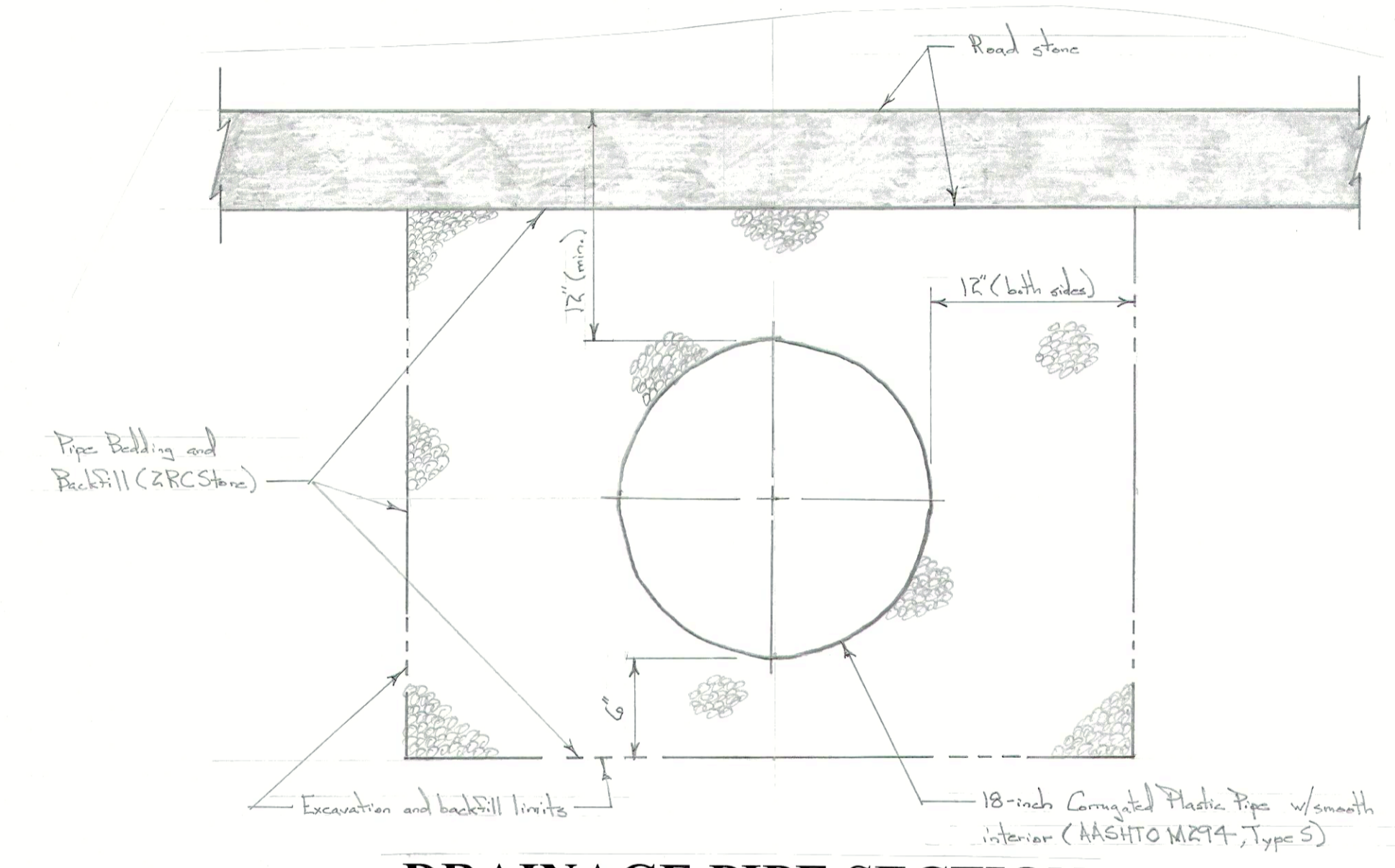
Scale: 1/4 in. = 1 ft.

Note: Most new drainage pipes are 18-inch diameter pipes. Install a new 36-inch pipe at Sta. 14+04 and 24-inch pipes at Sta. 35+81 and 55+48.



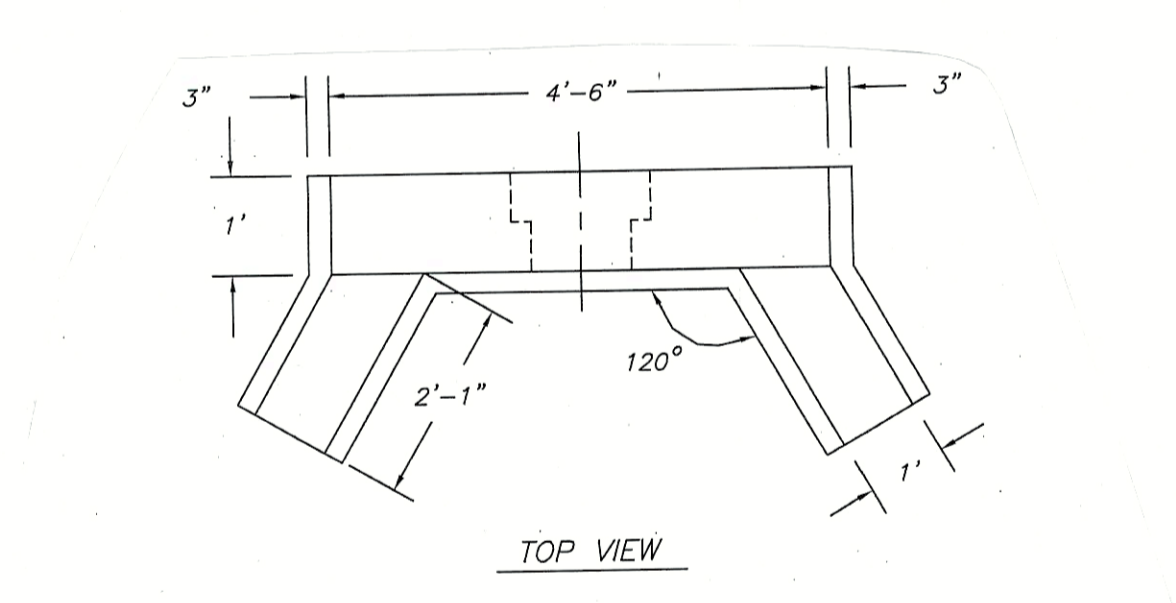
RIPRAP SPLASH PAD SECTION

Scale: 1.5 in. = 1 ft.

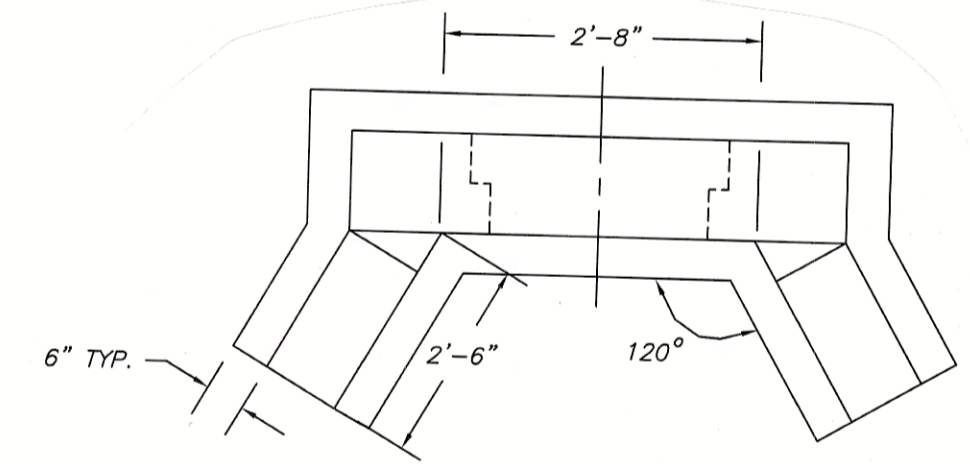


DRAINAGE PIPE SECTION

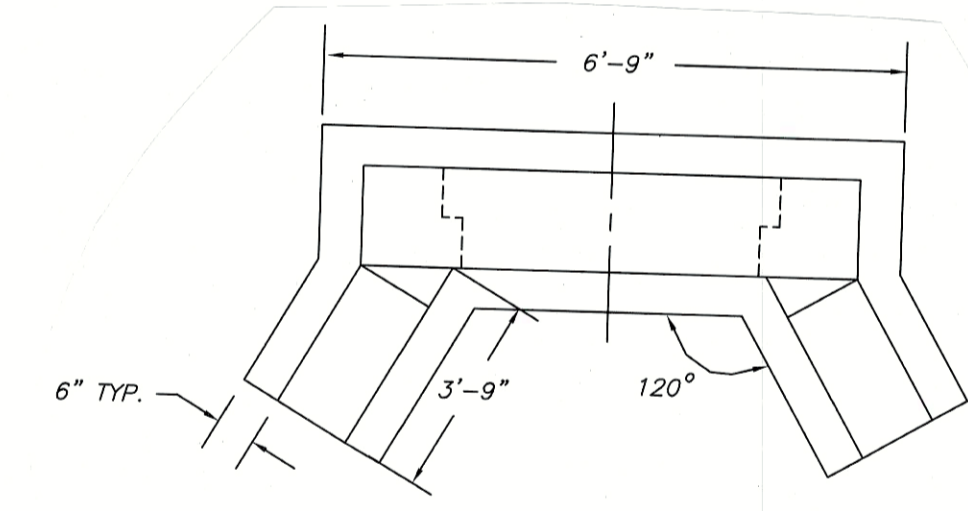
Scale: 1.5 in. = 1 ft.



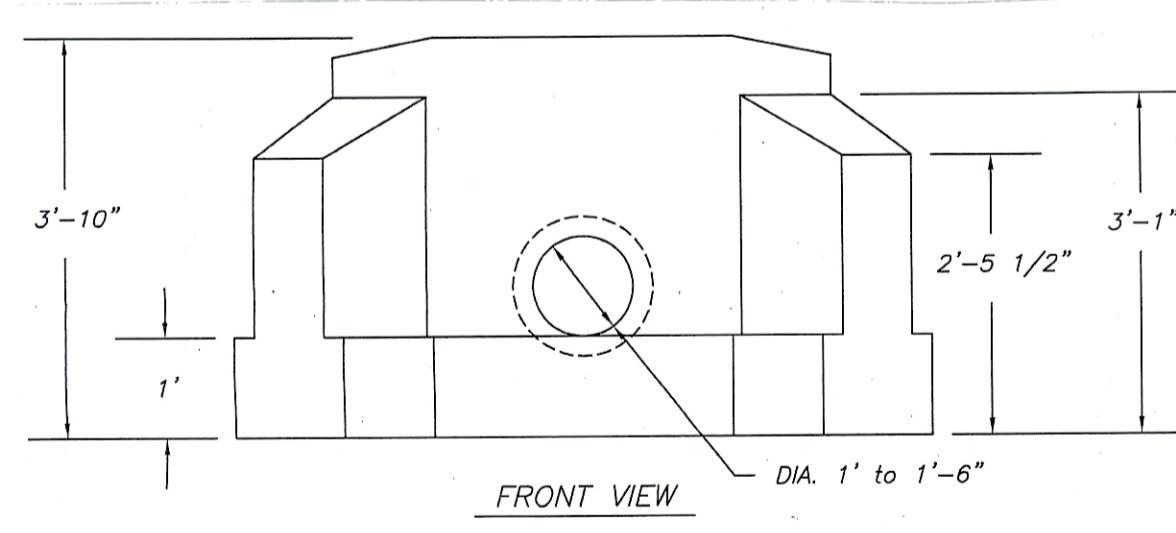
TOP VIEW



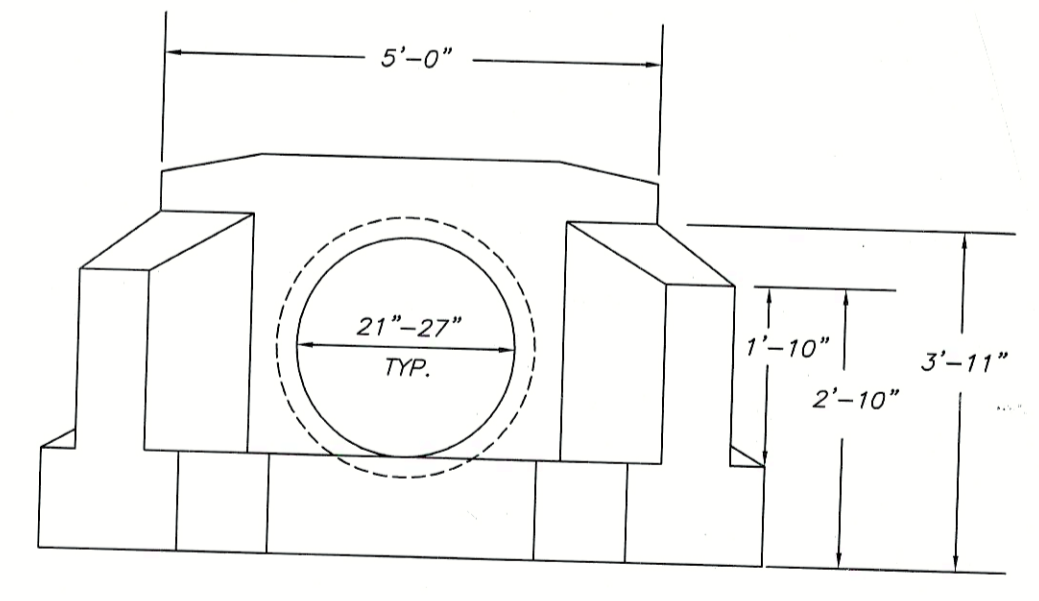
TOP VIEW



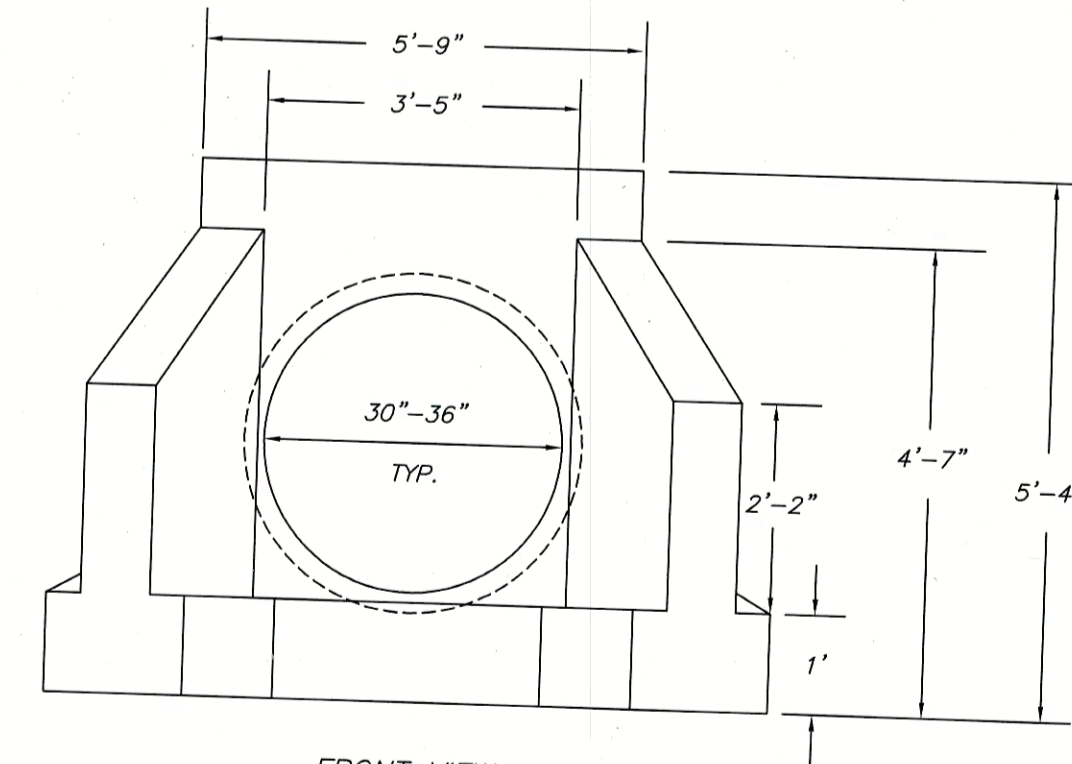
TOP VIEW



FRONT VIEW



FRONT VIEW



FRONT VIEW

36" HEADWALL

18" HEADWALL

24" HEADWALL

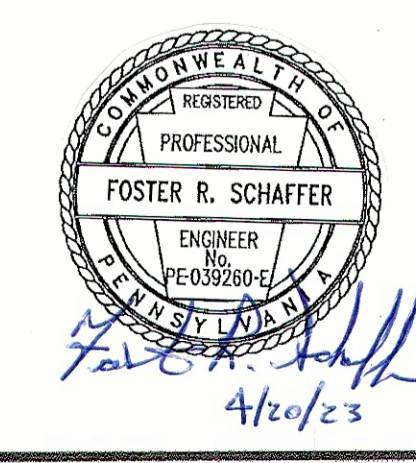
- NOTES:
1. MINIMUM 4,000 P.S.I. CONCRETE AT 28 DAYS WITH 5.5% A.E.
 2. REINFORCEMENT—A.S.T.M. A615 GRADE 60, MINIMUM 1 1/2" COVER
 3. ALL EXPOSED EDGES ARE CHAMFERED 1"
 4. MATERIAL AND CONSTRUCTION SHALL COMPLY WITH PENN. D.O.T. PUB. 408
 5. APPROX. WEIGHTS:
18" = 4,100 LBS.
24" = 5,200 LBS.
36" = 8,150 LBS.

HEADWALL DETAILS

No Scale

DRAINAGE PIPE NOTES

1. The minimum fall in the new drainage pipes is 3-inches over a 10-foot length (slope of 0.025).
2. Pipes should cross the road to suit field conditions and existing drainage paths. Pipes that cross the road perpendicularly are 20-feet long. Pipes that cross the road at an angle are 30-feet long
3. Perform minor grading at the inlet and outlet ends of the new and existing drainage pipes so that flow smoothly enters and exits the pipes.
4. Minimum cover over the new drainage pipes is 12-inches.
5. The depth of placement of the new drainage pipes can vary to meet field conditions. The downstream ends of the pipes can be deeper to meet field conditions and slope requirements.
6. Place precast concrete headwalls on the upstream and downstream ends of the new pipes. Construct riprap splash pads on the downstream ends of new pipes.



PENNSYLVANIA GAME COMMISSION	
SGL #147FRANKSTOWN & HUSTON TWSPL.	BLAIR CO.
SELDOM SEEN ROAD MAINTENANCE PROJECT	
DRAINAGE PIPE DETAILS	
REVISIONS	PROJECT NO. PGC-147-23-02
△	DRAWN BY: JS
△	DATE: 4/20/23
△	SHEET NO. 3 OF 3